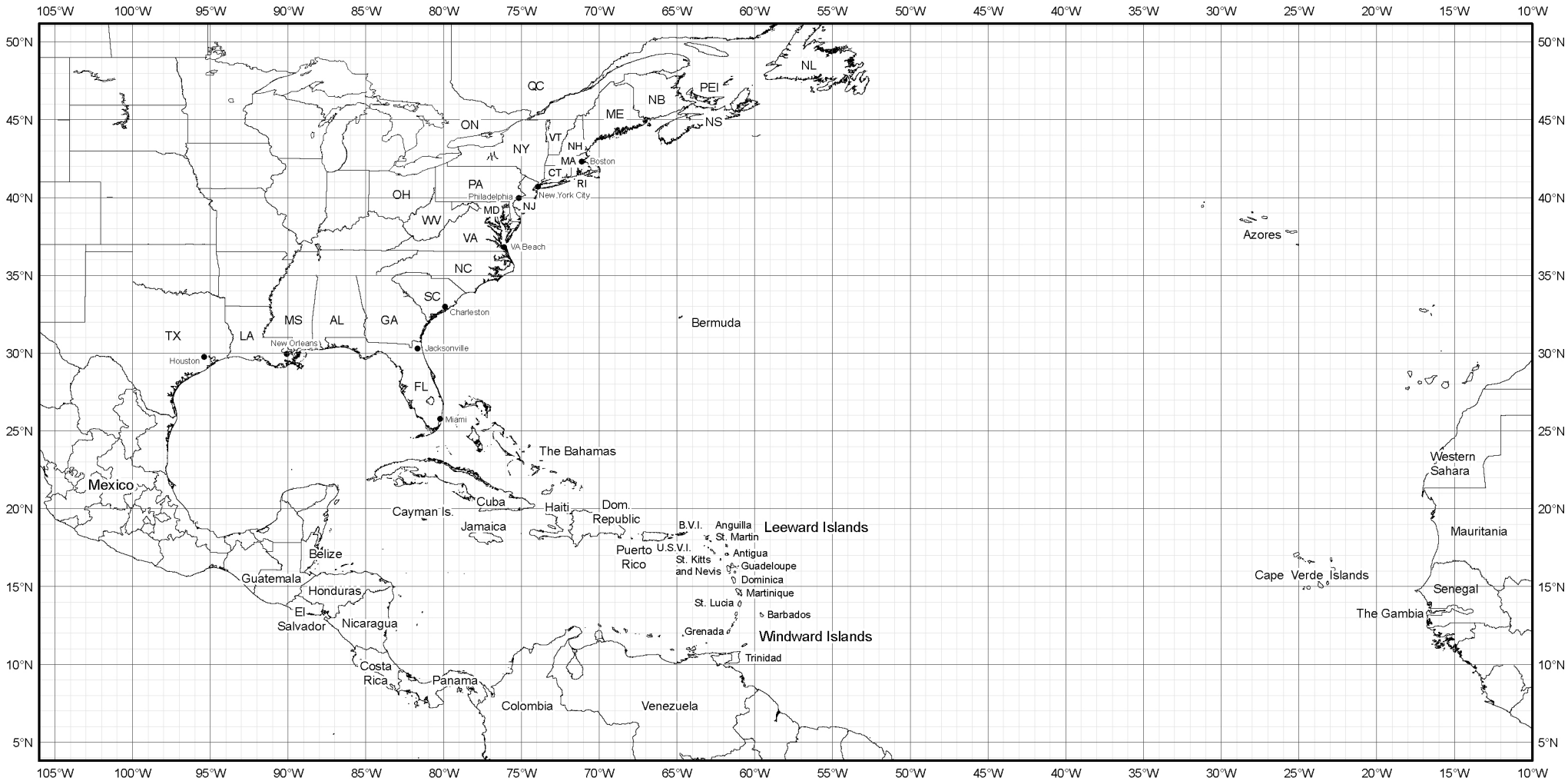




# Atlantic Basin Hurricane Tracking Chart

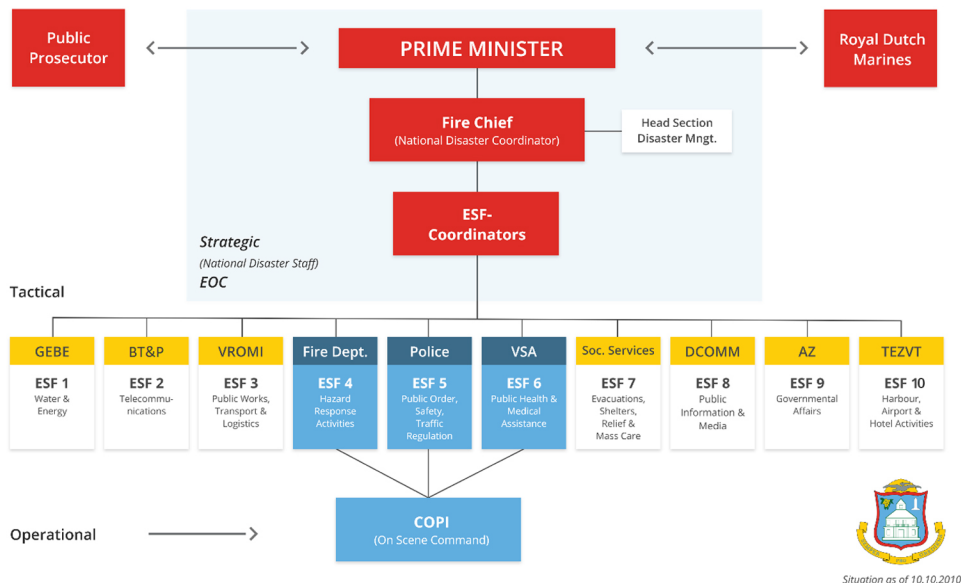
## GOVERNMENT OF SINT MAARTEN

[WWW.SINTMAARTENGOV.ORG](http://WWW.SINTMAARTENGOV.ORG) - TUNE IN TO 107.9FM



<b>St. Maarten Medical Center</b>	<b>910 or +1 721 543-1111</b>	<b>GEBE Hotline</b>	<b>+1 721 544-3100 or Toll Free 1844 432-3213</b>
<b>Police Department</b>	<b>911 or +1 721 542-2222</b>	<b>Mental Health Foundation</b>	<b>+1 721 542-1677</b>
<b>Ambulance Services</b>	<b>912 or +1 721 542-2111</b>	<b>White &amp; Yellow Cross Foundation</b>	<b>+1 721-548-4431</b>
<b>Coast Guard</b>	<b>913</b>	<b>Airport (PJIAE)</b>	<b>+1 721-546-7542</b>
<b>Child / Youth Hotline</b>	<b>918</b>	<b>Red Cross</b>	<b>+1 721-545-2333</b>
<b>Safe Haven</b>	<b>9333</b>	<b>SIMPSON BAY LAGOON AUTHORITY (SLAC)</b>	<b>+1 721-542-8503 or +1 721 542-8504</b>
<b>Fire / Disaster Department</b>	<b>919</b>	<b>St. Maarten Laboratory Services (SLS)</b>	<b>+1 721-542-2518</b>
<b>Fire Department (Airport)</b>	<b>+1 721 545-4222</b>	<b>Government Administration Building</b>	<b>+1 721-542-0349 / 0640 / 0651 / 2026</b>

## ORGANIZATIONAL STRUCTURE DISASTER MANAGEMENT SINT MAARTEN



The Disaster Management Organization is subdivided into 3 levels:

- Operational (On Scene Command = COPI);
- Tactical (Emergency Support Functions = ESF-groepen);
- Strategic (Nationale rampenstaf = EOC)

- The Prime Minister is in supreme command.
- The National Disaster Coordinator (Fire Chief) is charged with the operational coordination of disaster management.

**The Prime Minister** is charged with the Supreme Command in the fight against disasters and major accidents. The Prime Minister is assisted by a disaster staff composed by him.

High Command indicates two aspects: Political and administrative responsibility; control over everyone who participates in the (disaster) response, in particular with a view to good coordination.

Has supreme command and chairs the EOC meetings;

Prime Minister communicates EOC decisions to the population (via the media);

Prime Minister can issue via a decree an Emergency situation based on the Emergency situation ordinance (Lvo uitzonderingstoestand);

A curfew can be part of this decree;

The Prime Minister needs to inform Parliament, as well as the Governments of the Kingdom (including BES), Aruba and Curaçao.

### ESF GROUPS

In general, (a part of) the ESF groups are only operational if alarm phase 2 is in effect. The coordinators of the ESF operational groups form, as stated, the Operational Team.

## WATCHES AND WARNINGS

### TROPICAL STORM WATCH

Tropical storm conditions are possible, usually within 48 hours.

### TROPICAL STORM WARNING

Tropical storm conditions are expected, usually within 36 hours.

### HURRICANE WATCH

Hurricane conditions are possible, usually within 48 hours.

### HURRICANE WARNING

Hurricane conditions are expected, usually within 36 hours.

### TROPICAL STORM

Sustained winds of 39 to 73 mph

### HURRICANE

Sustained winds of 74 mph or higher

## PLANNING FOR AN EMERGENCY

Disaster kits and emergency supplies should be fully stocked by June 1, the start of hurricane season. Once a hurricane warning is declared, most of your preparations should be directed toward your home.

Remember to discuss your family emergency plan ahead of time. Your family may not be together when disaster strikes, so it is important to know how you will contact one another, how you will get back together and what to do in case of an emergency.

## HURRICANE SHELTERS

Shelters will be manned by law enforcement/military officials in order to guarantee order and the smooth operation within the facility.

The opening of the Shelters would be announced on [www.facebook.com/sxmgov](http://www.facebook.com/sxmgov), [www.sintmaartengov.org](http://www.sintmaartengov.org), 107.9FM and other Print Media. Prior to leaving your home, make sure everything is secure and you've packed all the essentials that you will need.

